

Orbital Flex™ Design ML2000



KEY FEATURES

- High Torque
- High Rigidity
- High Positional Accuracy
- Linear Torsional Stiffness
- Integrated Cross Roller Output Bearing

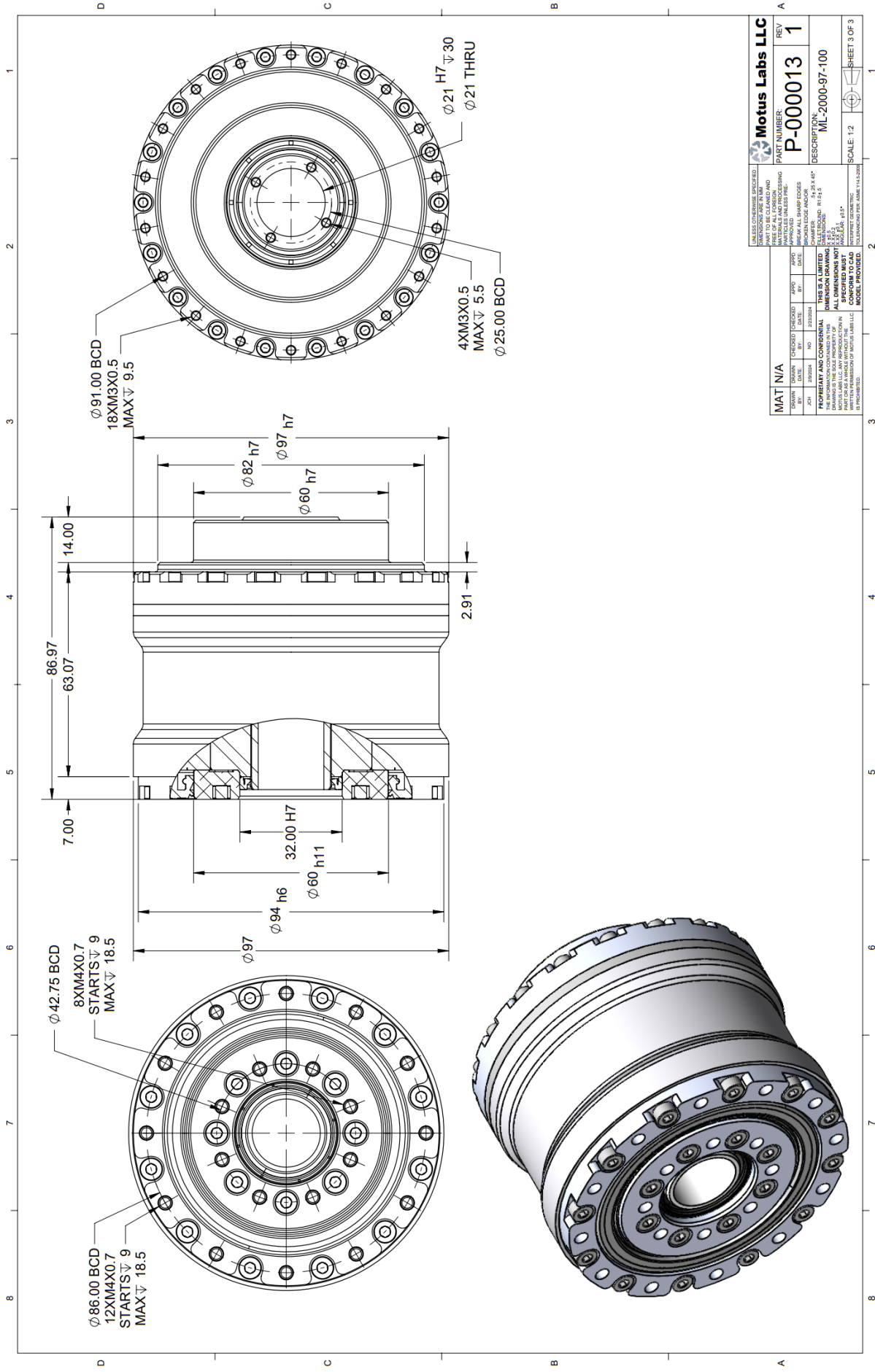
All of this, while maintaining zero backlash for 10,000 hours.

Specification	ML2000-97-100
Ratio	100:1
Rated Output Torque	130 Nm
Repeatable Peak Output Torque*	195 Nm
Rated Input Speed	2000 RPM
Repeatable Peak Input Speed*	4000 RPM
Efficiency*	Coming Soon
Backlash**	0 Arcsec
Starting Torque	0.4 Nm
Positional Accuracy (One-Way)	2 Arcmin
Mass	1.9 kg
Torsional Stiffness	15 Nm/Arcmin
Noise****	<70 dB

* Under defined conditions ** Measured at less than 18 Arcsec *** Awaiting third party verification **** Noise at rated speed in ambient room

ML2000 Life Testing has demonstrated that the ML2000 gear series sustains critical specifications, such as zero backlash, **over a span of 10,000 hours** without experiencing any gear failures. Our thorough life testing procedure evaluates both gear degradation and failure, providing customers with insights into the degradation and eventual failure of our gears.

Motus Labs designs and builds precision gear solutions for robotic and motion control applications to enable superior actuator performance. Our innovative, patent pending Orbital Flex™ gear design offers high torque, high rigidity, and zero backlash for 10,000 hours. We create solutions for emerging robotics applications that require the most sophisticated engineering and performance.



UNLESS OTHERWISE SPECIFIED		MOTUS LABS LLC	
DIMENSIONS ARE IN MM		PART NUMBER: P-000013	
TOLERANCES UNLESS SPECIFIED		REV: 1	
FINISH UNLESS SPECIFIED		DESCRIPTION: ML-2000-97-100	
MATERIAL UNLESS SPECIFIED		SCALE: 1:2	
MATERIAL: N/A		SHEET 3 OF 3	
DATE	DESIGNED	DATE	REV
BY	BY	BY	BY
NO.	NO.	NO.	NO.
REV.	REV.	REV.	REV.
THIS IS A LIMITED WARRANTY. THE WARRANTY DOES NOT COVER DEFECTS IN MATERIAL OR WORKMANSHIP. THE WARRANTY IS VOID IF THE PART IS USED IN AN UNAUTHORIZED MANNER.		THIS IS A LIMITED WARRANTY. THE WARRANTY DOES NOT COVER DEFECTS IN MATERIAL OR WORKMANSHIP. THE WARRANTY IS VOID IF THE PART IS USED IN AN UNAUTHORIZED MANNER.	